







BIM4BIPV

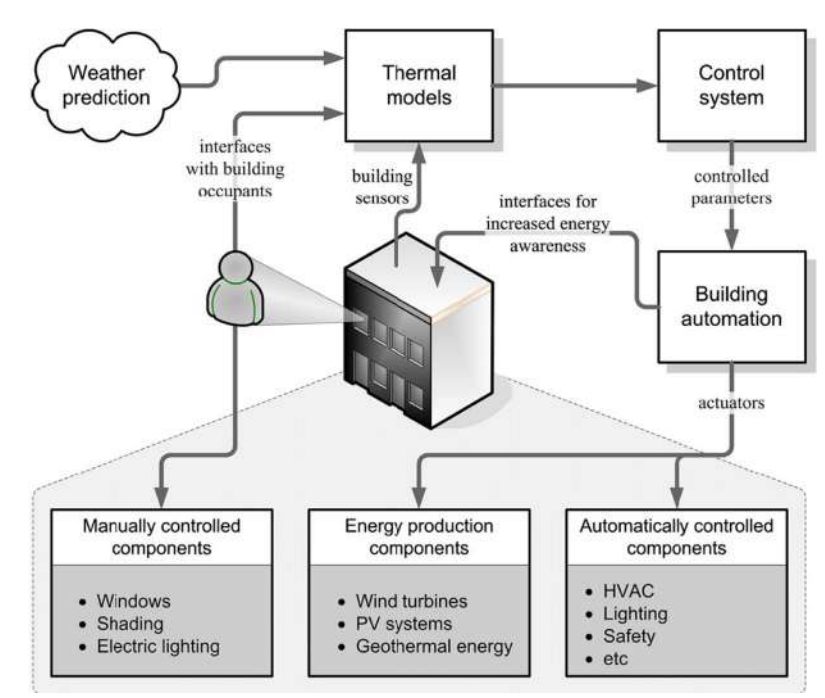
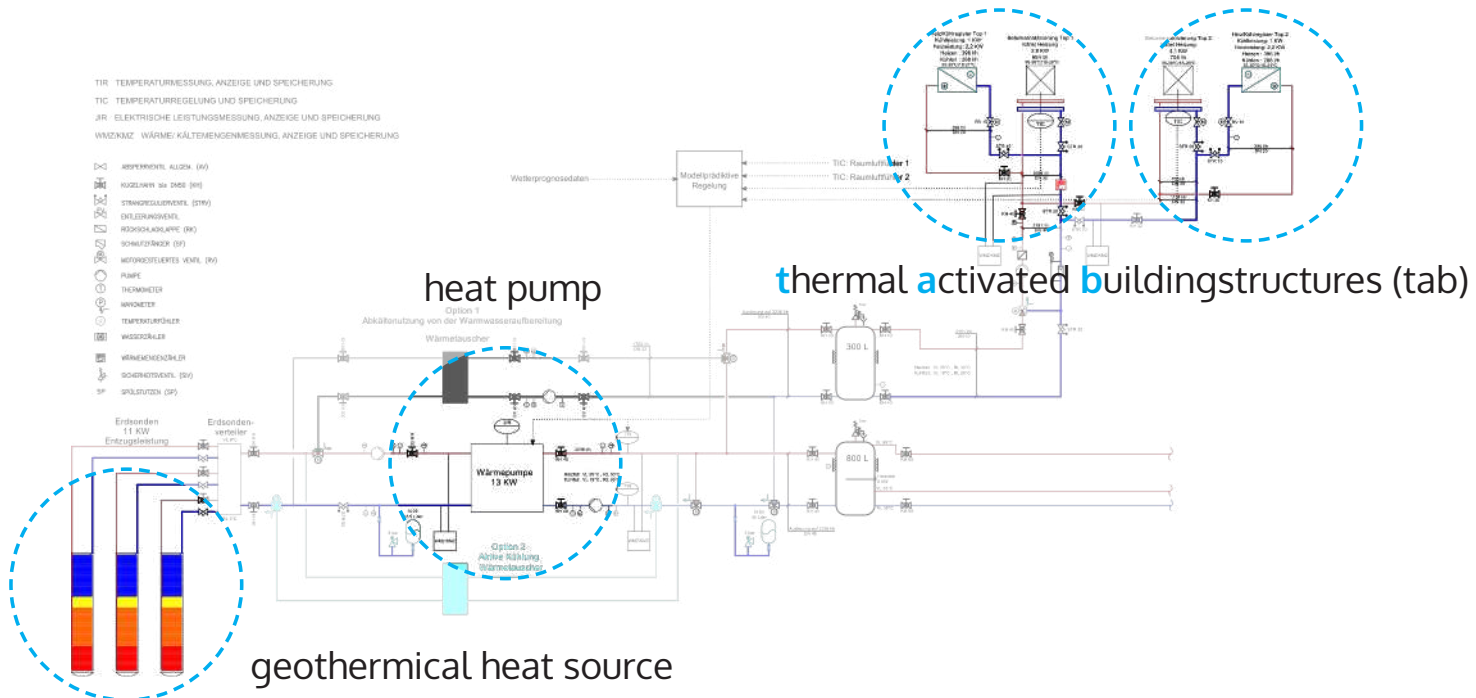
Energy self-sufficiency and solar architecture in extreme conditions
(over 2,150 m above sea level) | project title: Passive House Schiestlhaus, Styria 2005, 550 m²



BIM4BIPV

Energy self-sufficiency and solar architecture in extreme conditions
(over 2,150 m above sea level) | project title: Passive House Schiestlhaus, Styria 2005, 550 m²



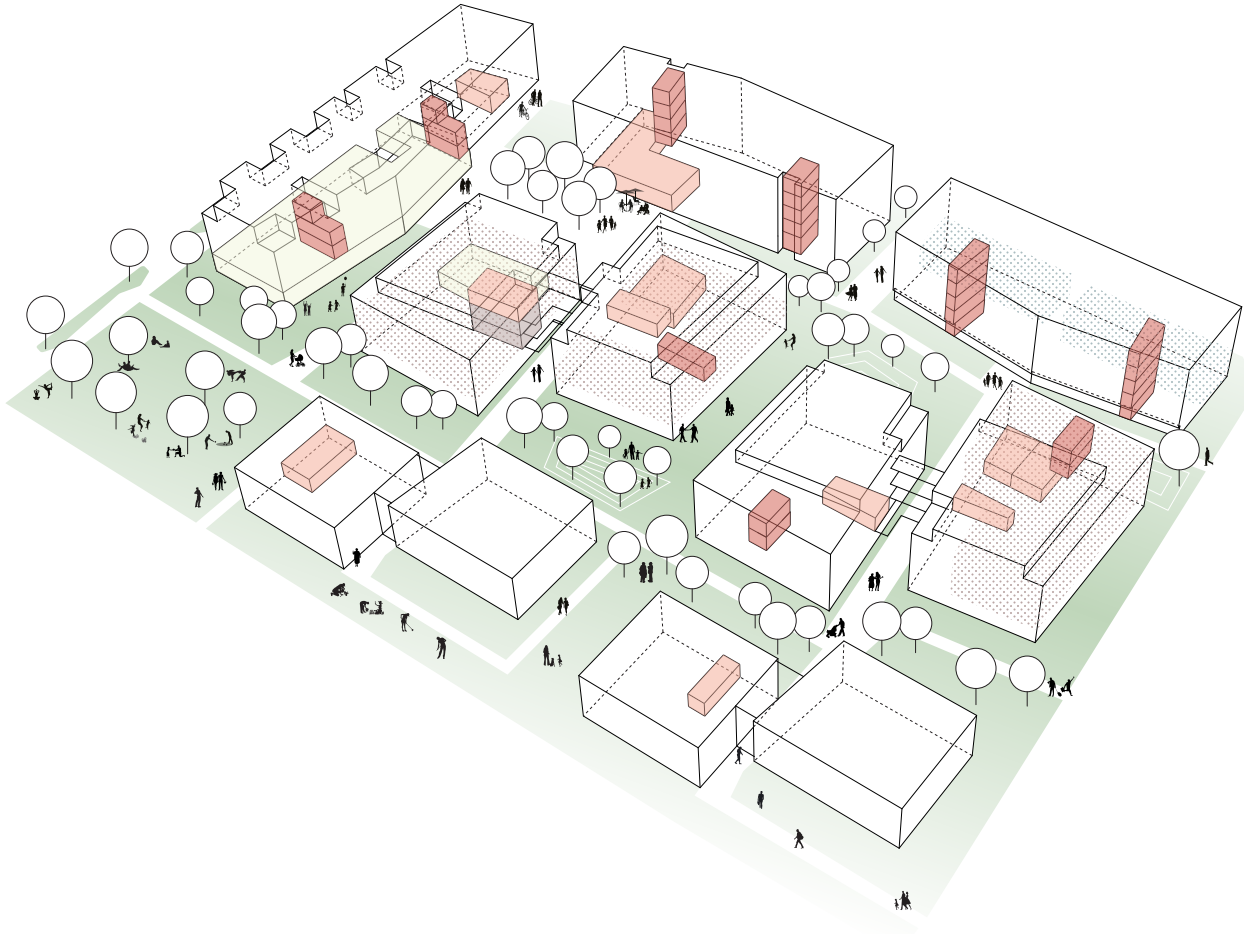


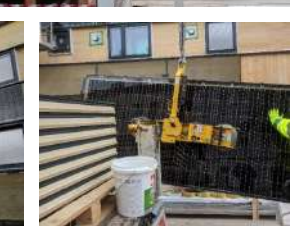


BIM4BIPV

Plus-energy quarter and solar architecture

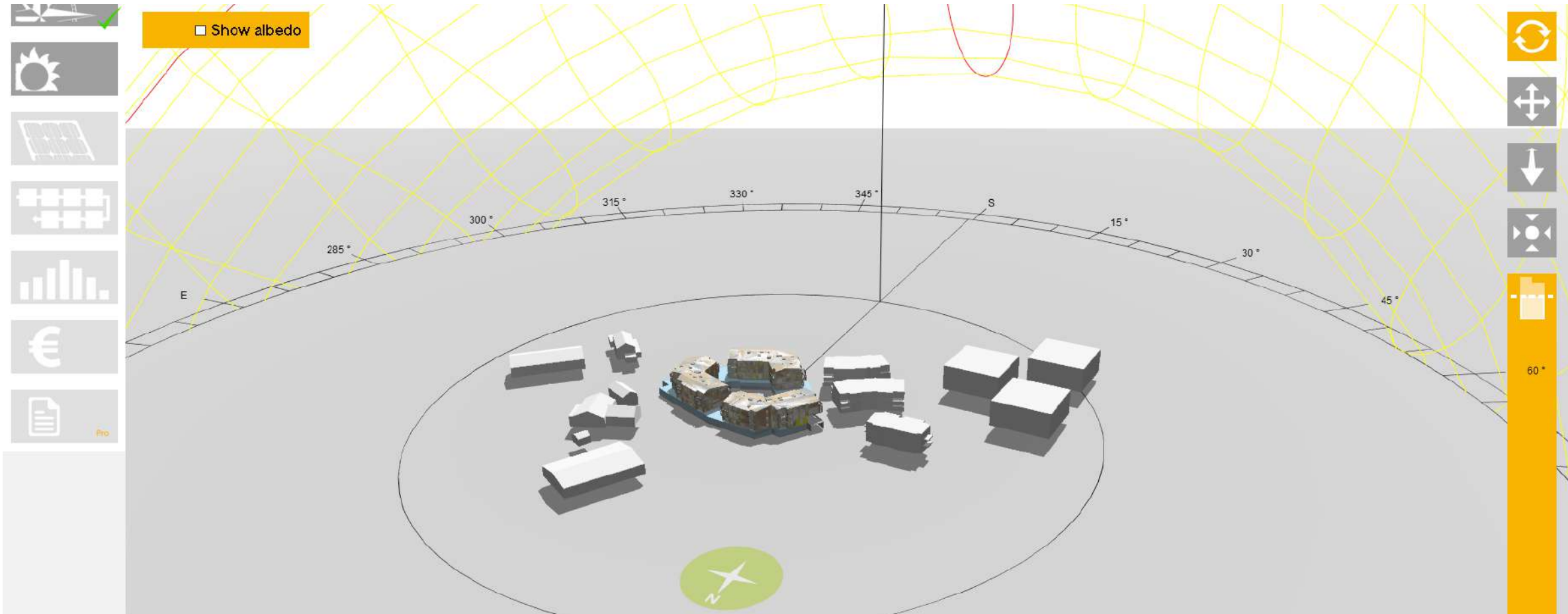
project title: Campo Breitenlee, Vienna I in planning, completion in 2024, 21.774 m²











3D Irradiation

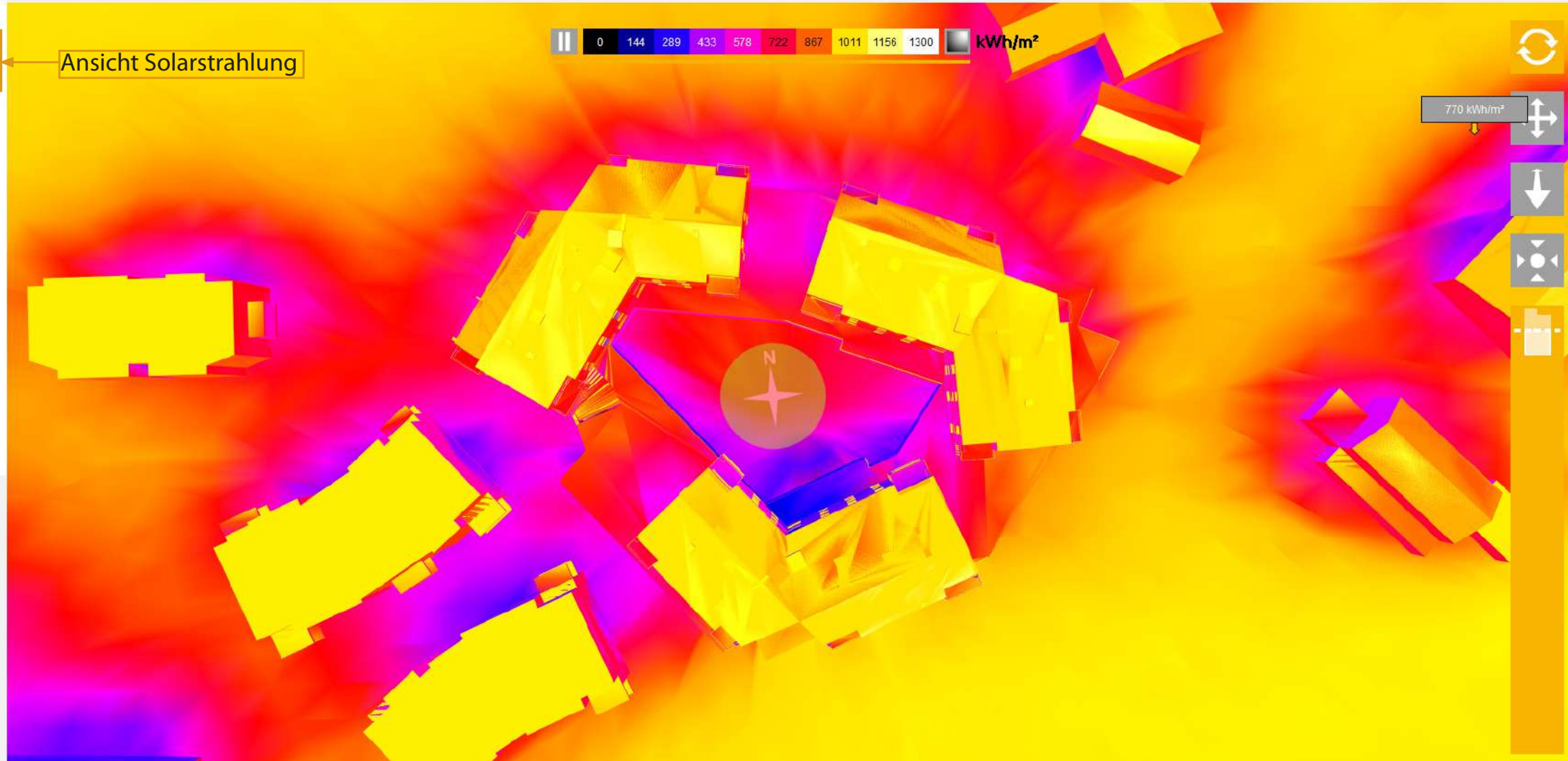
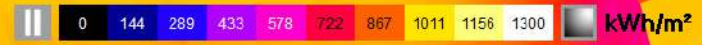
Calculation: Yearly Irradiation

Precision: Fast

| | | | | | | | | | | | | |
|---------|----|----|----|----|----|----|----|----|----|----|----|----|
| Months: | J | F | M | A | M | J | J | A | S | O | N | D |
| AM: | 0 | 1 | 2 | 3 | 4 | 5 | 6 | 7 | 8 | 9 | 10 | 11 |
| PM: | 12 | 13 | 14 | 15 | 16 | 17 | 18 | 19 | 20 | 21 | 22 | 23 |



Ansicht Solarstrahlung



770 kWh/m²



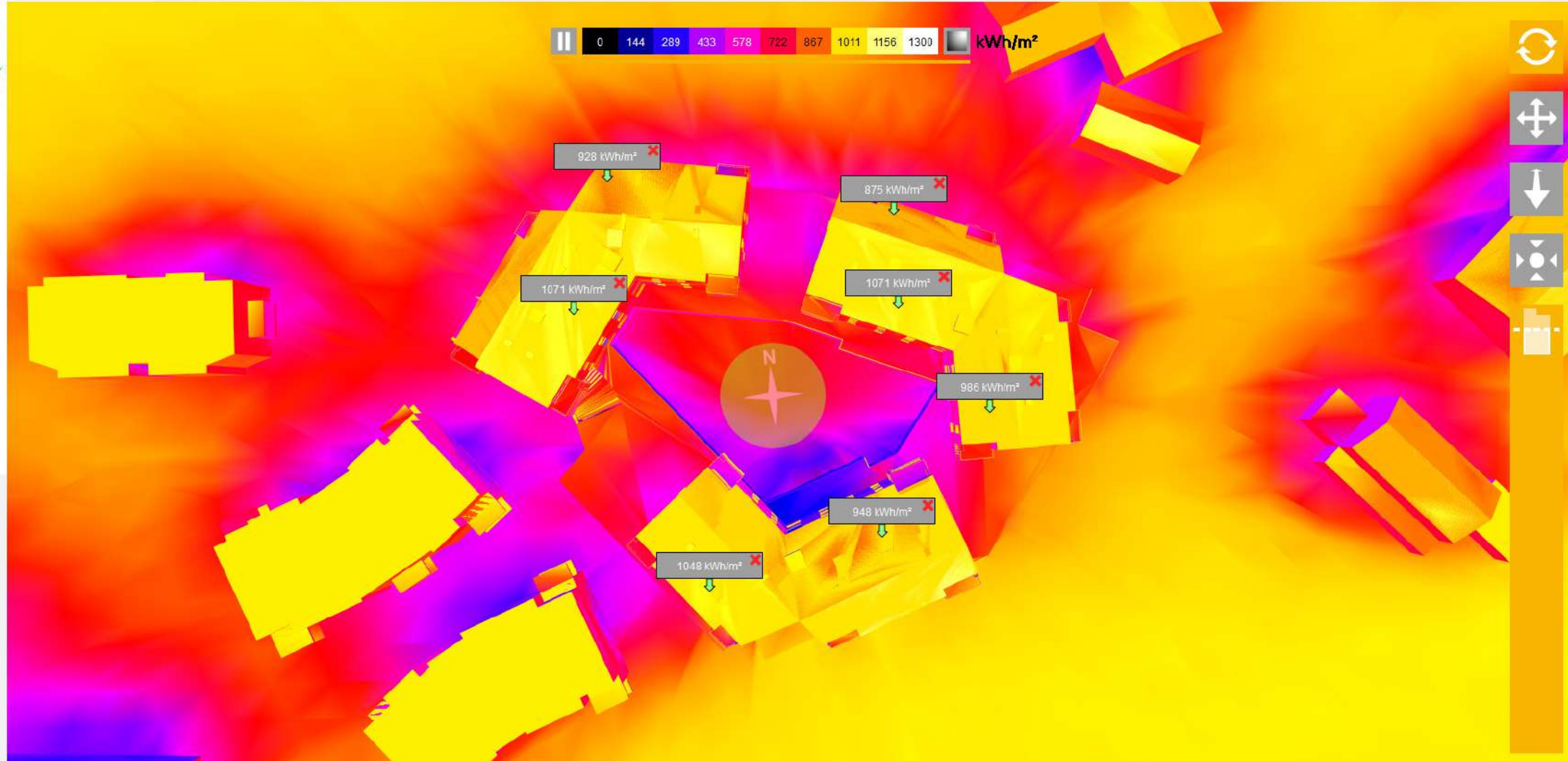
3D Irradiation

Calculation: Yearly Irradiation

Precision: Fast

| | | | | | | | | | | | | |
|---------|----|----|----|----|----|----|----|----|----|----|----|----|
| Months: | J | F | M | A | M | J | J | A | S | O | N | D |
| AM: | 0 | 1 | 2 | 3 | 4 | 5 | 6 | 7 | 8 | 9 | 10 | 11 |
| PM: | 12 | 13 | 14 | 15 | 16 | 17 | 18 | 19 | 20 | 21 | 22 | 23 |

-
-
-
-
-
- Pro



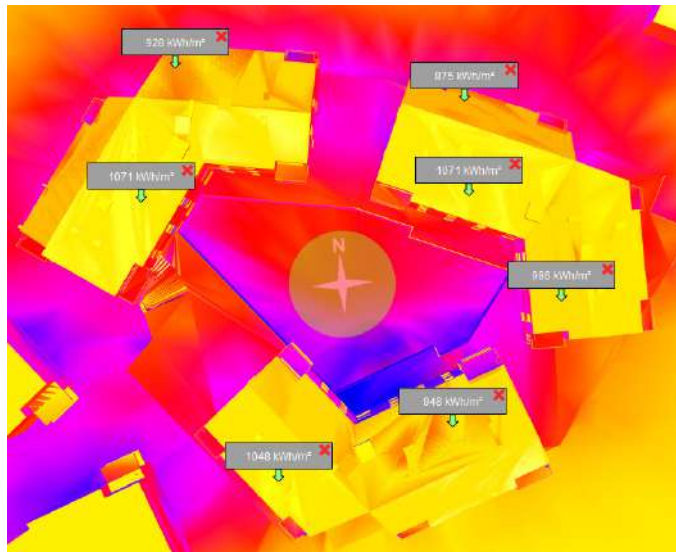
-
-
-
-
-
-

V1

durchschnittliche Sonneneinstrahlung in kWh/m²

Jänner - Dezember

| Months: | J | F | M | A | M | J | J | A | S | O | N | D |
|---------|----|----|----|----|----|----|----|----|----|----|----|----|
| AM: | 0 | 1 | 2 | 3 | 4 | 5 | 6 | 7 | 8 | 9 | 10 | 11 |
| PM: | 12 | 13 | 14 | 15 | 16 | 17 | 18 | 19 | 20 | 21 | 22 | 23 |

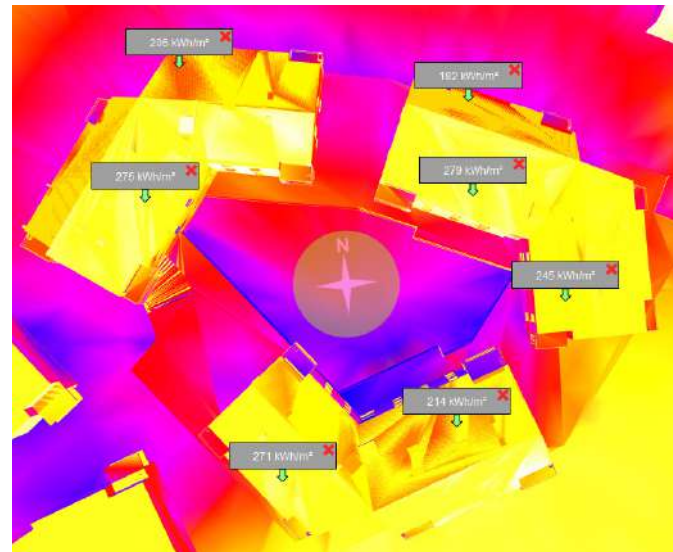


V2

durchschnittliche Sonneneinstrahlung in kWh/m²

September - Februar

| Months: | J | F | M | A | M | J | J | A | S | O | N | D |
|---------|----|----|----|----|----|----|----|----|----|----|----|----|
| AM: | 0 | 1 | 2 | 3 | 4 | 5 | 6 | 7 | 8 | 9 | 10 | 11 |
| PM: | 12 | 13 | 14 | 15 | 16 | 17 | 18 | 19 | 20 | 21 | 22 | 23 |

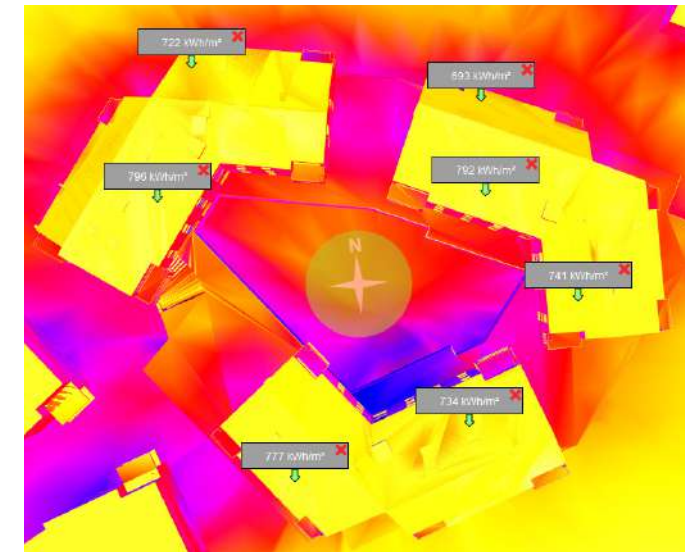


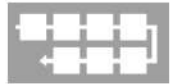
V3

durchschnittliche Sonneneinstrahlung in kWh/m²

März - August

| Months: | J | F | M | A | M | J | J | A | S | O | N | D |
|---------|----|----|----|----|----|----|----|----|----|----|----|----|
| AM: | 0 | 1 | 2 | 3 | 4 | 5 | 6 | 7 | 8 | 9 | 10 | 11 |
| PM: | 12 | 13 | 14 | 15 | 16 | 17 | 18 | 19 | 20 | 21 | 22 | 23 |





PV(T) layouts

BAPV(T)



Installation type: Flat

Parallel mode: Off

Module tilt: 30,0 °

System slope: 0,0 °

Rotation: 0,00 °

Horizontal panels: 1

Vertical panels: 1

Display module switches

Horizontal spacing: 0,100 m

Vertical spacing: 0,100 m

Orientation: Landscape

Power: 155.3 kWp
Modules area: 950.8 m²
PV generation: 143094.9 kWh
Array yield: 921.4 kWh/kWp
Shading losses: 0.0 %
Heat losses: 8.9 %

| Name | Modules |
|-----------------------------------|---------|
| EOSolare srl - 156M216VC (930) 46 | 4 |
| EOSolare srl - 156M216VC (930) 47 | 6 |
| EOSolare srl - 156M216VC (930) 48 | 1 |
| EOSolare srl - 156M216VC (930) 49 | 3 |
| EOSolare srl - 156M216VC (930) 50 | 1 |
| EOSolare srl - 156M216VC (930) 51 | 1 |
| EOSolare srl - 156M216VC (930) 52 | 2 |
| EOSolare srl - 156M216VC (930) 53 | 4 |
| EOSolare srl - 156M216VC (930) 54 | 1 |
| BIPV systems | |

BAPV Module editor

Supplier: Helena Frühwald

Model: HF 3000

Load from...

Save to My Database

Configuration Technical Special features Cost/PLM

Main

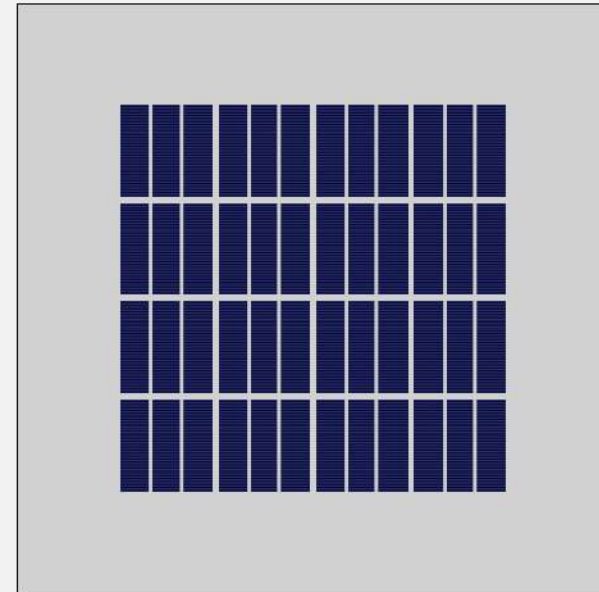
Width: 1000 mm
 Length: 1000 mm
 Color:
 Opacity: 100 %

Cells description

156x156 - mono_Si
 H spacing: 10 mm
 V spacing: 10 mm
 H cells: 4
 V cells: 4

Bifaciality

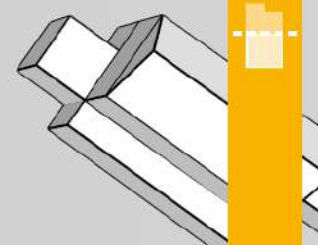
Bifacial cells
 Bifaciality factor: 80,00 %



Show irradiation

Display shading losses

Display modules angles



PV(T) layouts

BAPV(T)

Ergebnisse:

Power: 5.6 kWp
 Modules area: 34.2 m²
 PV generation: ...
 Array yield: ...
 Shading losses: ...
 Heat losses: ...

| Name | Modules |
|--|---------|
| <ul style="list-style-type: none"> BAPV systems <ul style="list-style-type: none"> EOSolare srl - 156M216VC (930) 1 BIPV systems | 6 |

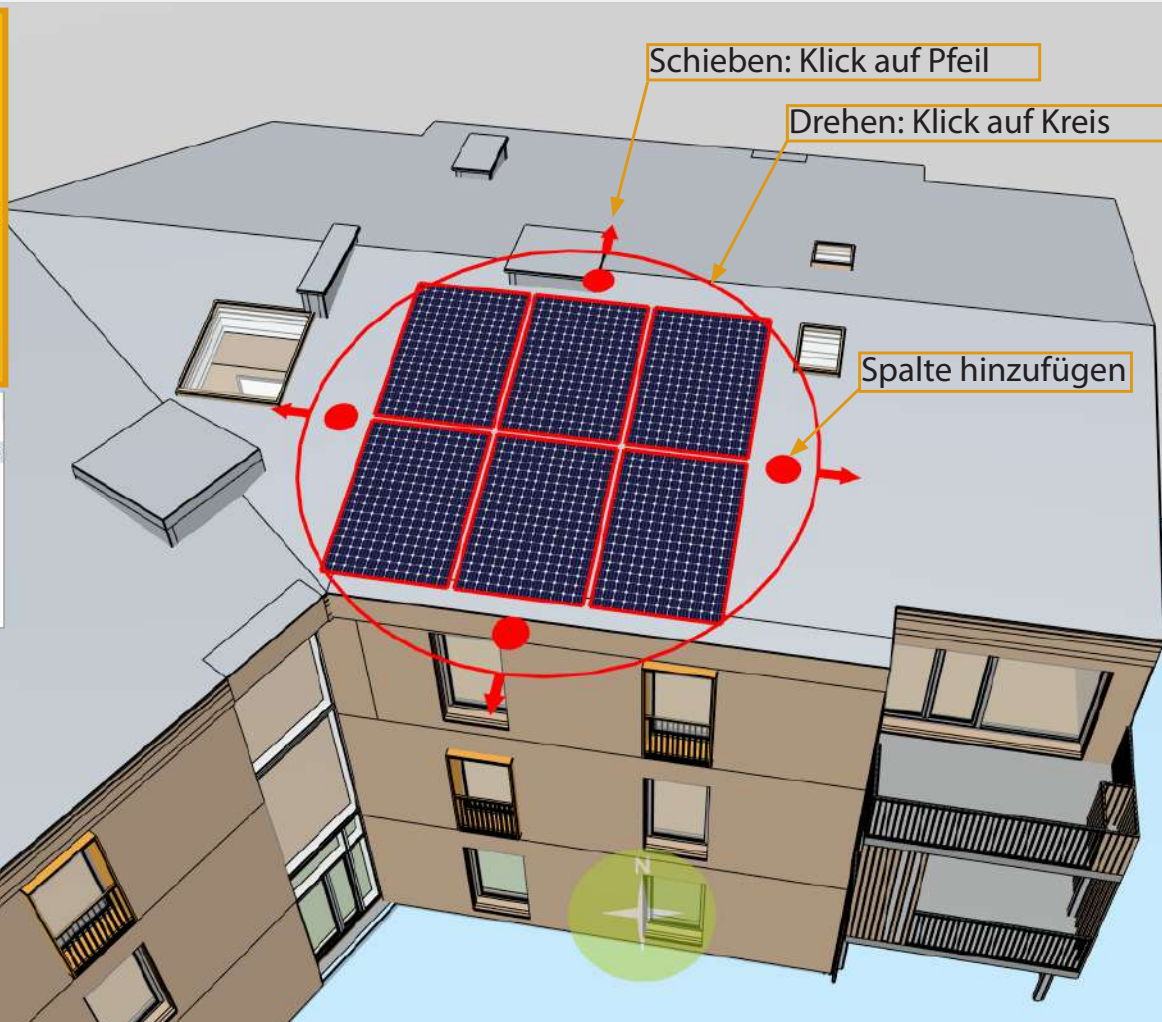


Installation type: Flat
 Parallel mode: Off
 Module tilt: 30,0°
 System slope: 0,0°
 Rotation: 0,00°

Horizontal panels: 3
 Vertical panels: 2
 Display module switches

Horizontal spacing: 0,100 m
 Vertical spacing: 0,100 m
 Orientation: Portrait

-
-
-
-
-
-



Show irradiation

PV(T) layouts

BAPV(T)



Installation type: Flat
 Parallel mode: Off
 Module tilt: 30,0°
 System slope: 0,0°
 Rotation: 0,00°

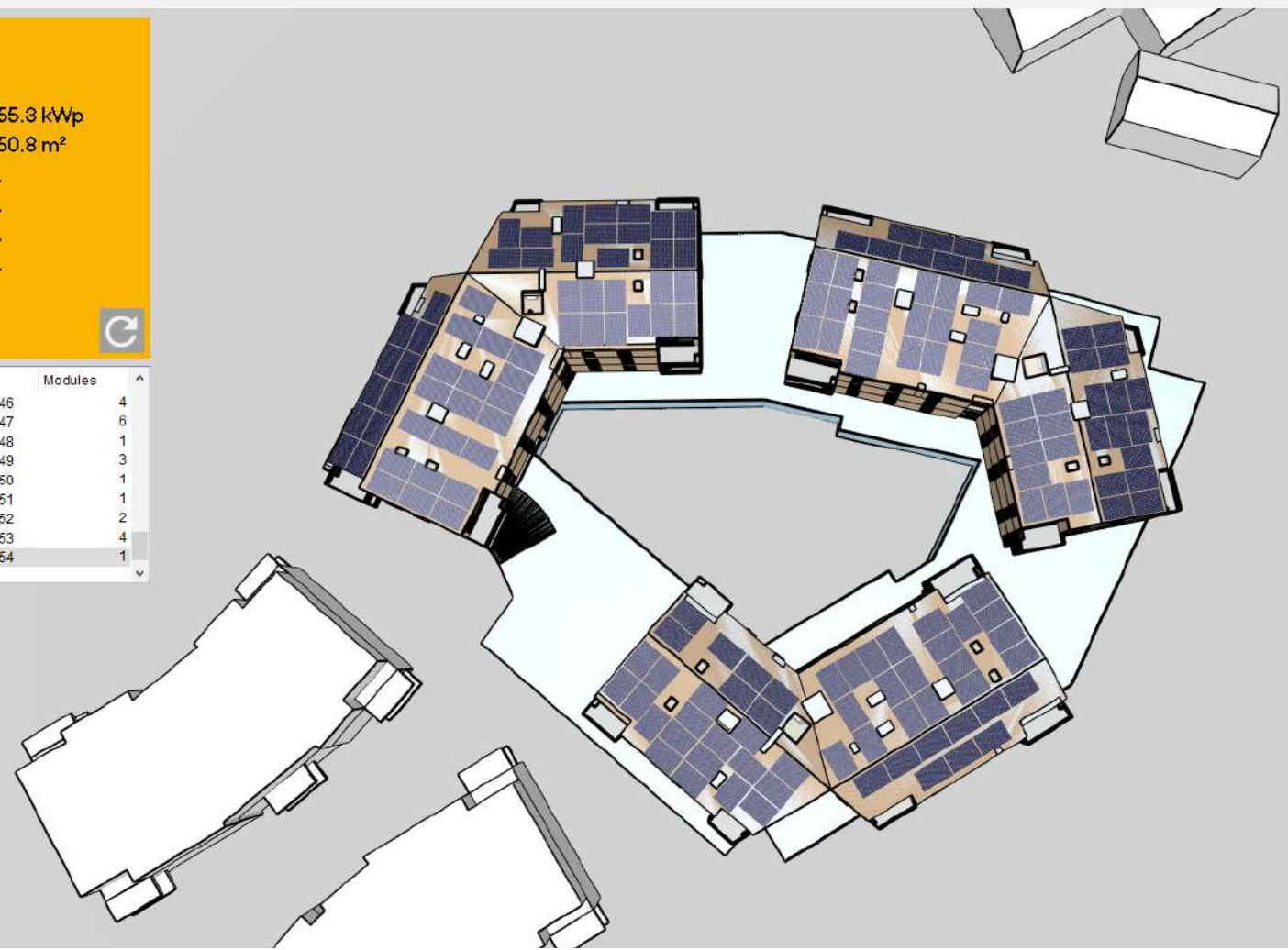
Horizontal panels: 1
 Vertical panels: 1
 Display module switches

Horizontal spacing: 0,100 m
 Vertical spacing: 0,100 m
 Orientation: Landscape

-
-
-
-
-
-

Power: 155.3 kWp
Modules area: 950.8 m²
PV generation: ...
Array yield: ...
Shading losses: ...
Heat losses: ...

| Name | Modules |
|-----------------------------------|---------|
| EOSolare srl - 156M216VC (930) 46 | 4 |
| EOSolare srl - 156M216VC (930) 47 | 6 |
| EOSolare srl - 156M216VC (930) 48 | 1 |
| EOSolare srl - 156M216VC (930) 49 | 3 |
| EOSolare srl - 156M216VC (930) 50 | 1 |
| EOSolare srl - 156M216VC (930) 51 | 1 |
| EOSolare srl - 156M216VC (930) 52 | 2 |
| EOSolare srl - 156M216VC (930) 53 | 4 |
| EOSolare srl - 156M216VC (930) 54 | 1 |
| BIPV systems | |



Show irradiation